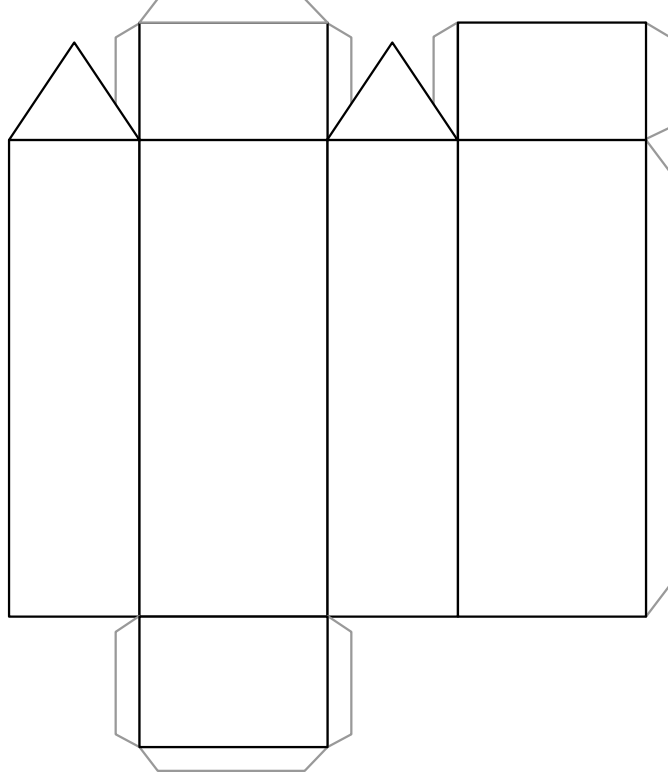


Orthorhombic Net

Before coloring your crystal discuss the shapes you see in the net.

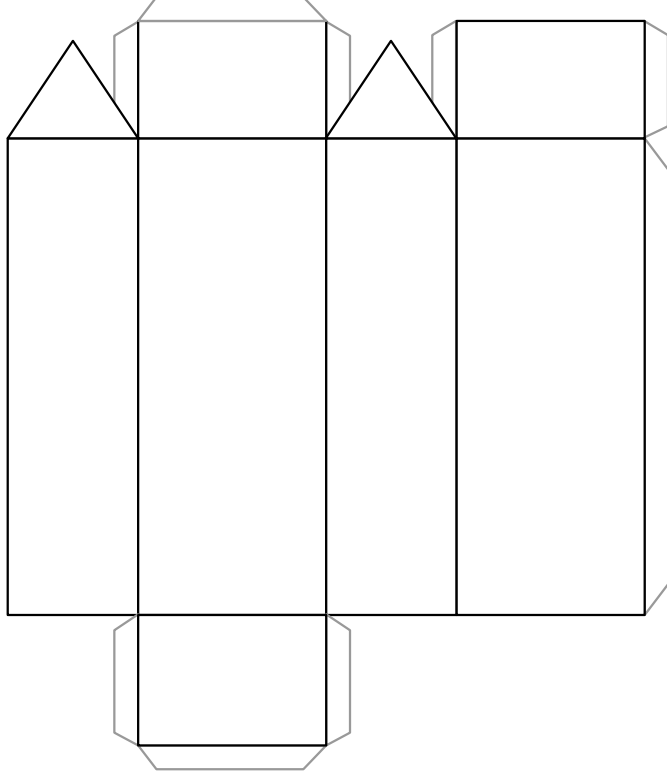
Use the table tents to help you figure out if the shapes fit into more than one category.



Orthorhombic Net

Before coloring your crystal discuss the shapes you see in the net.

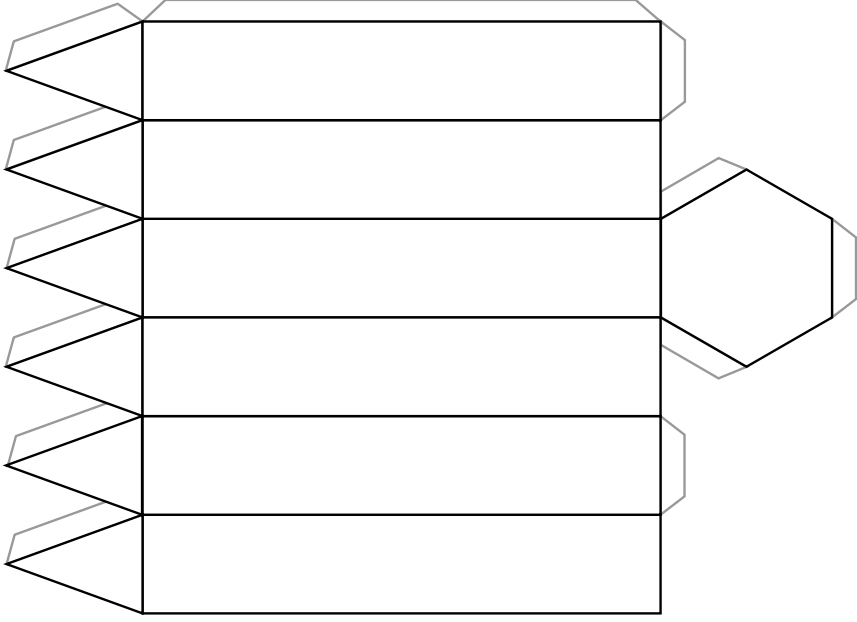
Use the table tents to help you figure out if the shapes fit into more than one category.



Trigonal Net

Before coloring your crystal discuss the shapes you see in the net.

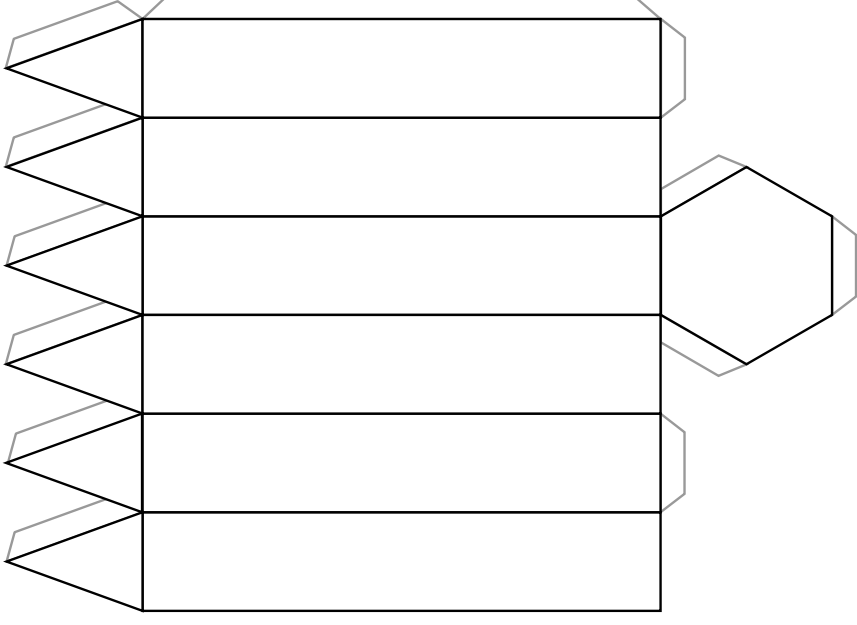
Use the table tents to help you figure out if the shapes fit into more than one category.



Trigonal Net

Before coloring your crystal discuss the shapes you see in the net.

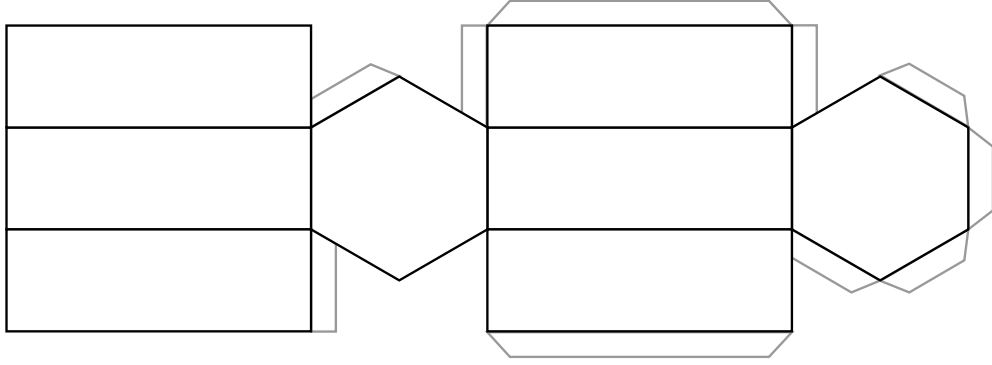
Use the table tents to help you figure out if the shapes fit into more than one category.



Hexagonal Net

Before coloring your crystal discuss the shapes you see in the net.

Use the table tents to help you figure out if the shapes fit into more than one category.



Hexagonal Net

Before coloring your crystal discuss the shapes you see in the net.

Use the table tents to help you figure out if the shapes fit into more than one category.

